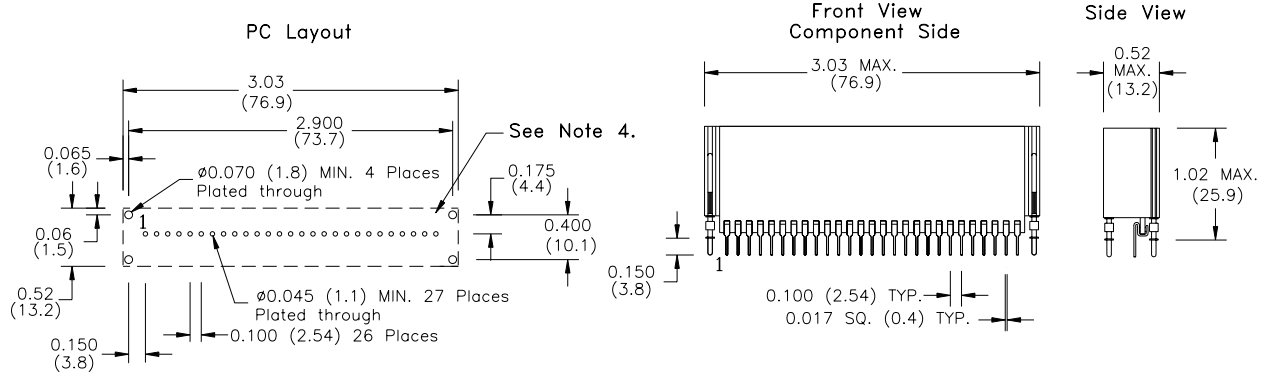


PACKAGE INFORMATION AND DIMENSIONS

Vertical Through-Hole Mount (Suffix N)

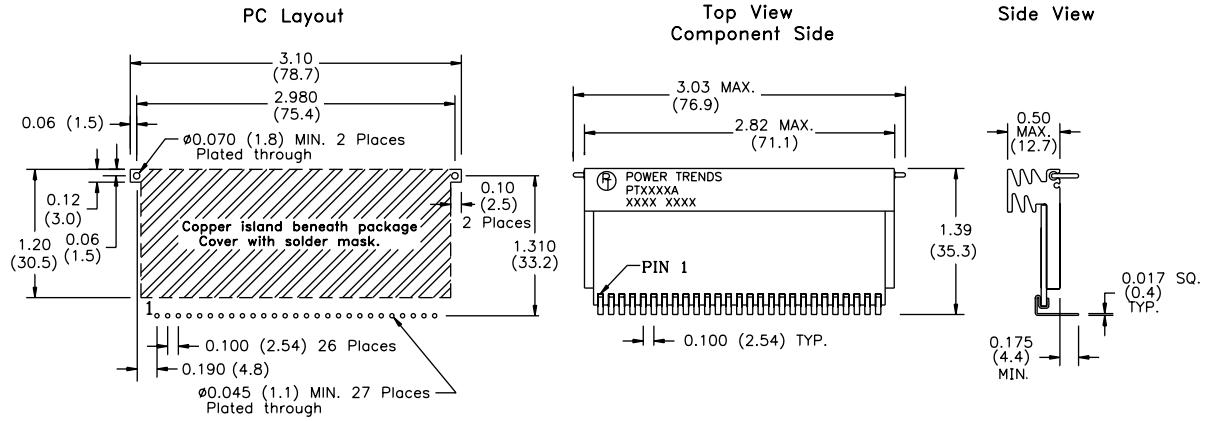


Notes: (Rev. B)

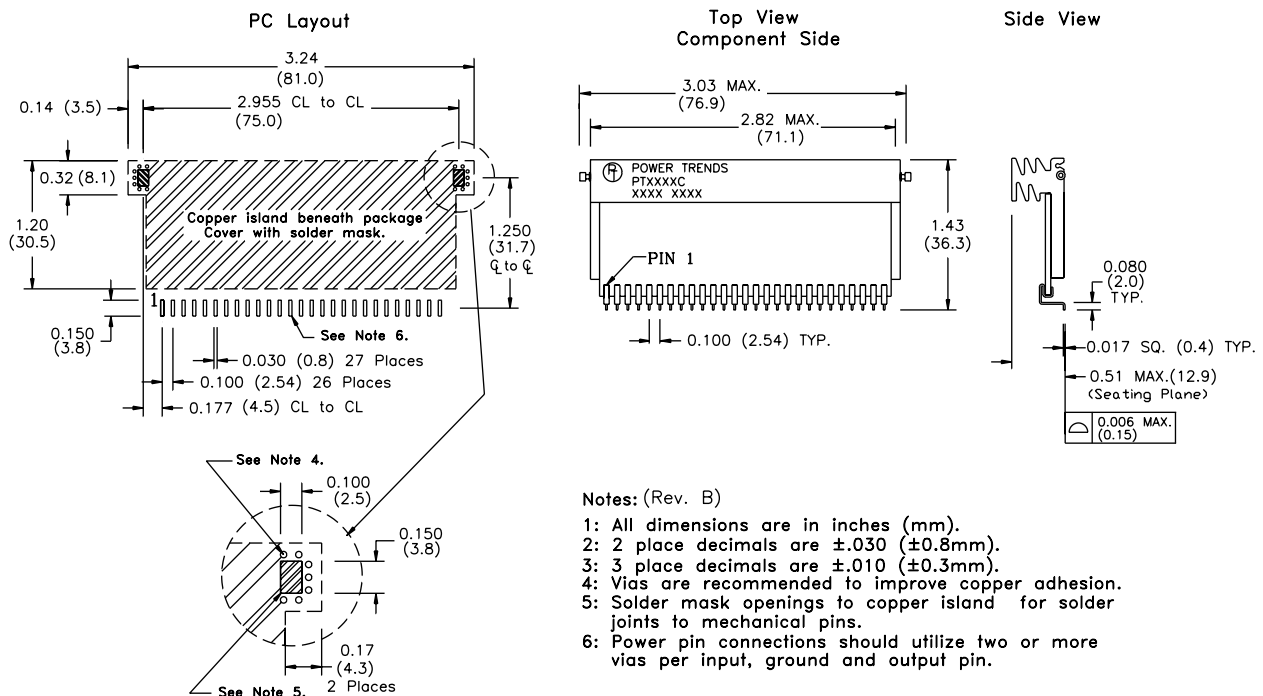
- 1: Dimensions are in inches (mm).
- 2: 2 place decimals are  $\pm 0.030$  ( $\pm 0.8$ mm).
- 3: 3 place decimals are  $\pm 0.010$  ( $\pm 0.3$ mm).
- 4: Recommended mechanical keep out area.

## PACKAGE INFORMATION AND DIMENSIONS

### Horizontal Through-Hole Mount (Suffix A)



### Surface Mount (Suffix C)



#### Notes: (Rev. B)

- 1: All dimensions are in inches (mm).
- 2: 2 place decimals are  $\pm 0.030$  ( $\pm 0.8$ mm).
- 3: 3 place decimals are  $\pm 0.010$  ( $\pm 0.3$ mm).
- 4: Vias are recommended to improve copper adhesion.
- 5: Solder mask openings to copper island for solder joints to mechanical pins.
- 6: Power pin connections should utilize two or more vias per input, ground and output pin.